



TRACES

TDS Reconciliation Analysis and Correction Enabling System

e-Tutorial


Traces PDF Converter V1.1L Light Version

For Downloading Utility Logging In to Traces


Home | About Us | Contact Us | Help | Related Links | Login

Search In Keyword

English

 **TDS**
Centralized Processing Cell

TRACES
TDS Reconciliation Analysis and Correction Enabling System


सत्यमेव जयते
Government of India
Income Tax Department

Home Deductor Tax Payer Help

Login

i For first time login to TRACES, login with existing User Id and Password as in TIN. In case you are unable to login using existing User Id and Password as in TIN, click on 'Register as New User', select type of user as 'Deductor' and proceed. Click [here](#) to view e-Tutorial

User Id*

Password*

[Forgot User Id?](#)

[Forgot Password?](#)

[Register as New User](#)

i This website uses cookies to maintain user preference and session information. Disabling cookies in your browser might not allow you to perform certain activities

Login to TRACES as a deductor by entering User Id and Password and clicking on 'Go'



Downloading Utility After Logging In (contd.) – Landing Page

Home | About Us | Contact Us | Help | Related Links | Logout


Search In Keyword

A A A

English



TRACES
TDS Reconciliation Analysis and Correction Enabling System



सत्यमेव जयते
Government of India
Income Tax Department

[Dashboard](#) | [Statements / Payments](#) | [Defaults](#) | [Downloads](#) | [Profile](#) | [Help](#)

Welcome AGRA PUELIC INSTITUTE OF TECHNOLOGY & COMPUTER EDUCATION, You have logged in on 31-Jan-2013 at 11:42 AM

Quick Links

- [My Home](#)
- [Challan Status](#)
- [Request for Justification Report Download](#)
- [Request for NSDL Conso File](#)
- [Download Form 16 / 16A](#)


Welcome to TRACES!


TRACES is a user-friendly application that will help you to manage your TDS / TCS account. Some of the functionalities available through TRACES are listed below.

- Dashboard view presenting summary of your account
- Statements / Payments
 - View challan status and challan consumption details
 - View TDS-TCS Credit for a PAN and verify PAN of Tax Payer
- Downloads
 - Download requested files
 - Download Form 16 / 16A
- Profile
 - Update your profile information

Customer Care

Toll-Free: 1800 103 0344

 0120 4314600

 contactus@tdscpc.gov.in

User Login Details

TAN / PAN: AGRA10006D

IP: 125.19.234.74

Last logged in on:
31-Jan-2013 at 11:42 AM

Do not use Back or Refresh button on any page as this may lead to inconsistent behaviour

Landing page will be displayed

Downloading Utility After Logging In (contd.) – Landing Page

Home | About Us | Contact Us | Help | Related Links | Logout

Search In Keyword

TDS Centralized Processing Cell

TRACES TDS Reconciliation Analysis and Correction Enabling System

Government of India
Income Tax Department

Dashboard Statements / Payments Defaults Downloads Profile Help

Welcome AGRA PUBLIC INSTITUTE OF TECHNOLOGY

Quick Links

- My Home
- Challan Status
- Request for Justification Report Download
- Request for NSDL Conso File
- Download Form 16 / 16A

Downloads

- Requested Downloads
- Form 16
- Form 16A
- Download Challan Status Inquiry (.csi) File
- View your BIN

Click on 'Requested Downloads' under 'Downloads' menu

Some of the functionalities available through TRACES are listed below.

- Dashboard view presenting summary of your account
- Statements / Payments
 - View challan status and challan consumption details
 - View TDS-TCS Credit for a PAN and verify PAN of Tax Payer
- Downloads
 - Download requested files
 - Download Form 16 / 16A
- Profile
 - Update your profile information

Customer Care

Toll-Free: 1800 103 0344

0120 4814600

contactus@tdscpc.gov.in


User Login Details

TAN / PAN: AGRA10006D


IP: 125.19.234.74

Last logged in on: 31-Jan-2013 at 11:42 AM

Downloading Utility After Logging In (contd.) – Landing Page

**TDS**
Centralized Processing Cell

TRACES
TDS Reconciliation Analysis and Correction Enabling System



DashboardStatements / PaymentsDefaultsDownloadsProfileHelp

Welcome AGRA PUBLIC INSTITUTE OF TECHNOLOGY & COMPUTER EDUCATION, You have logged in on 31 Jan 2013 at 11:42 AM
Files Requested For Download

Attention Deductors:
For TDS certificates being downloaded after 13th January 2013:

While generating PDFs, if you are getting a message "The Input file is tampered" then it might be because
i) The Input File is tampered; OR
ii) You need to install Version 1.1 of the utility. Please uninstall the old version, download the PDF Utility version 1.1 and install the same

Filter requests by entering search criteria

Search Option 1
Request Number

Search Option 2
Request Date From To
(dd-mm-yy; e.g., 12-Dec-1930)

Click on 'View All' to view all download requests




Click on 'TRACES PDF Generation Utility' to start the download

To generate Form 16 / 15A in PDF format you will need TRACES PDF Generation Utility. [Click here](#) to download this utility.

Downloading Utility After Logging In (contd.) – Landing Page

Home | About Us | Contact Us | Help | Related Links ▾ | Logout

Search In ▾ Keyword 🔍 A A A 📄 🇮🇳 English ▾




TDS Reconciliation Analysis and Correction Enabling System



Dashboard Statements / Payments Defaults Downloads Profile Help

Welcome AGRA PUBLIC INSTITUTE OF TECHNOLOGY & COMPUTER EDUCATION, You have logged in on 31-Jan-2013 at 11:42 AM

Download TRACES PDF Generation Utility to convert Form 16 / 16A text files into PDF

 Kindly submit the verification code to view the link for downloading the utility

Verification Code

 Click to refresh image



Enter text as in above image*


Fields marked
by asterisk
are mandatory

For more details
on any screen,
click on Help icon


PDF Download Utility

Home | About Us | Contact Us | Help | Related Links ▾ | Logout

Search In ▾ Keyword  A A A  English ▾

**TDS**
Centralized Processing Cell


TRACES
TDS Reconciliation Analysis and Correction Enabling System



Dashboard Statements / Payments Defaults **Downloads** Profile **Help**

Welcome AGRA PUBLIC INSTITUTE OF TECHNOLOGY & COMPUTER EDUCATION, You have logged in on 31-Jan-2013 at 11:42 AM

Download TRACES PDF Generation Utility to convert Form 16 / 16A text files into PDF

 You may download the utility using any one of the server links provided below.

TRACES-PDF-CONVERTERV 1.1 Light Version (Needs JRE1.6 or above - Size ~9 MB)

- [HTTP Download Server 1](#)
- [HTTP Download Server 2](#)

[Installation instruction](#)

[Back to Requested Downloads](#)

For more details on any screen, click on Help icon

Steps to Use Traces PDF Converter V1.1L Light Version

Downloading Traces PDF Converter V1.1L Light Version

- Extract TRACES-PDF-CONVERTERV1.1L.zip file in a folder on your system.
- If WinZIP is not already installed on your system ,download it from www.winzip.com and install it.
- After extraction you will have **Run.bat** file and **TRACES-PDF-ConverterV1.1L.jar** in a same folder.
- To run this Utility, JRE version 1.6 or above is needed. Get the same from www.java.com and install (Steps are given in pages 10 to 22).

Java Installation Steps

Go to www.java.com

Click on "Free Java Download" button

The screenshot shows the Java website homepage. At the top, there is a red header with the Java logo on the left and a search bar on the right. Below the header, the main content area features the text "JAVA + YOU, DOWNLOAD TODAY!" in large, bold letters. To the right of this text is a photograph of a man and a woman sitting together, looking at a laptop. Below the main text, there is a prominent red button labeled "Free Java Download". A callout bubble points to this button with the text "Click on 'Free Java Download' button". Below the button, there are links for "What is Java?", "Do I have Java?", and "Need Help?". At the bottom of the page, there is a section titled "Experience Java in Action" which contains several small thumbnail images and their corresponding titles: "Java + Alice", "Java + Livescribe", "Java + Neil Young", "Java + Blu-ray Disc", "Java Developer Conferences", and "Java + Amazon Kindle". The Oracle logo is visible in the bottom right corner.

Java™

Java in Action Downloads Help Center

Search

JAVA + YOU,
DOWNLOAD
TODAY!

Free Java Download

Free Java Download

What is Java? Do I have Java? Need Help?

Experience Java in Action

Java + Alice

Java + Livescribe

Java + Neil Young

Java + Blu-ray Disc

Java Developer Conferences

Java + Amazon Kindle

Select Language | About Java | Developers
Privacy | Terms of Use | Trademarks | Disclaimer

ORACLE

Java Installation Steps (contd.)

The screenshot shows the Java website's download page for Windows. The header features the Java logo and navigation links: 'Java in Action', 'Downloads', and 'Help Center'. A search bar is located in the top right. On the left, a 'Help Resources' sidebar lists links like 'What is Java?', 'Remove Older Versions', 'Disable Java', 'Error Messages', 'Troubleshoot Java', and 'Other Help'. The main content area is titled 'Download Java for Windows' and specifies the 'Recommended Version 7 Update 11 (filesize: 39 MB)'. A large red button labeled 'Agree and Start Free Download' is prominently displayed. Below this, a paragraph states that by downloading Java, the user acknowledges the terms of the [end user license agreement](#). A blue icon with a document symbol indicates that after installation, the user may need to restart their browser. Two callouts are present: one pointing to the 'Agree and Start Free Download' button with the text 'Click on “Agree and Start Free Download”', and another pointing to the 'Installation Instructions' and 'System Requirements' links with the text 'If you want to know how to install Java, please click on “Installation Instructions” link.' At the bottom, there are links for 'Select Language', 'About Java', 'Support', 'Downloads', 'Privacy', 'Terms of Use', 'Trademarks', and 'Disclaimer', along with the Oracle logo.

Java

Java in Action Downloads Help Center

Search

Help Resources

- [What is Java?](#)
- [Remove Older Versions](#)
- [Disable Java](#)
- [Error Messages](#)
- [Troubleshoot Java](#)
- [Other Help](#)

Download Java for Windows

Recommended Version 7 Update 11 (filesize: 39 MB)

Agree and Start Free Download

Click on “Agree and Start Free Download”

By downloading Java you acknowledge that you have read and accepted the terms of the [end user license agreement](#)

When your Java installation completes, you may need to restart your browser (close all browser windows and re-open) to enable the Java installation.

- [Installation Instructions](#)
- [System Requirements](#)

If you want to know how to install Java, please click on “Installation Instructions” link.

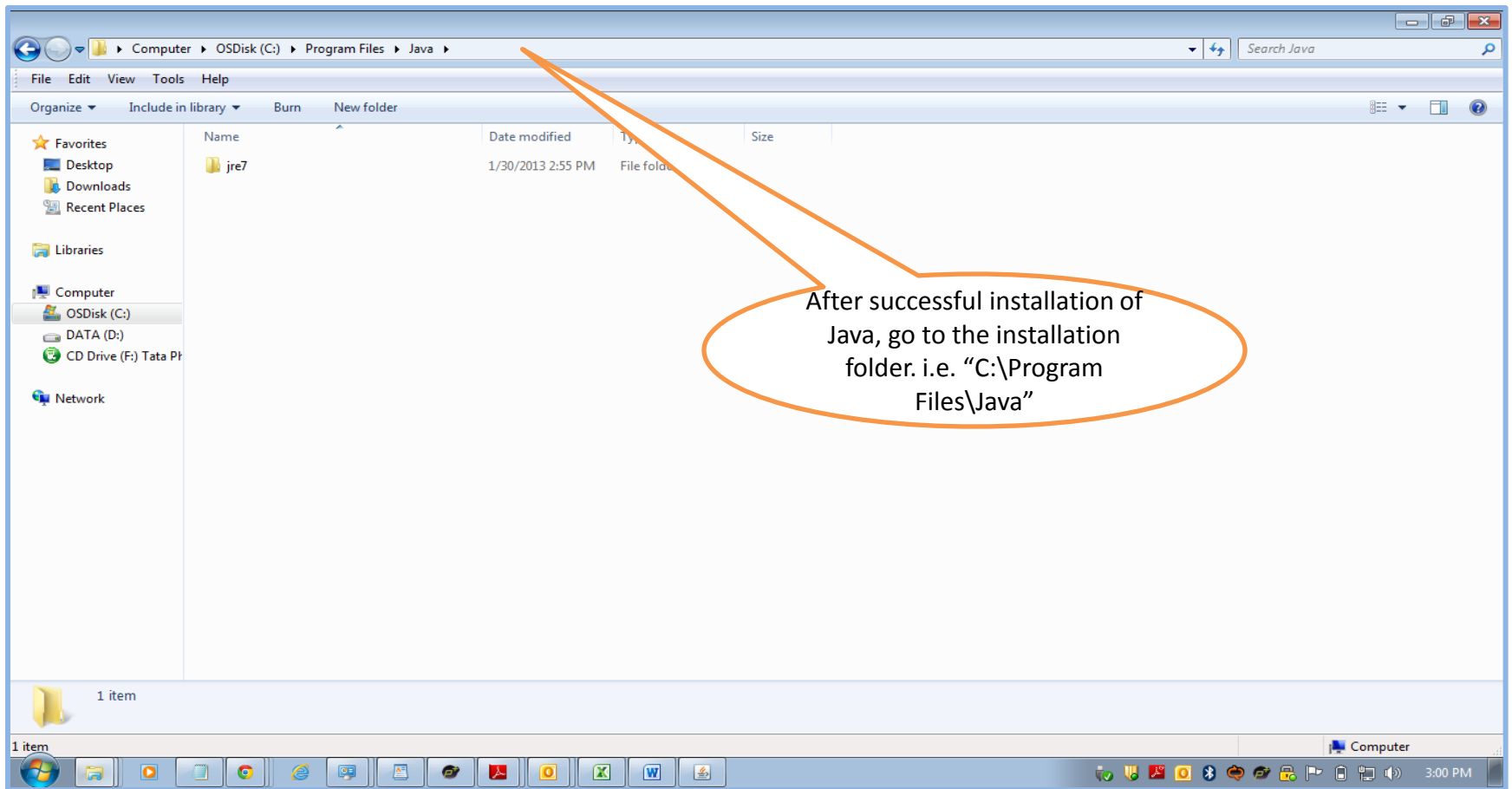
Not the right operating system? [See all Java downloads.](#)

Java software for your computer, or the Java Runtime Environment, is also referred to as the Java Runtime, Runtime Environment, Runtime, JRE, Java Virtual Machine, Virtual Machine, Java VM, JVM, VM, or Java download.

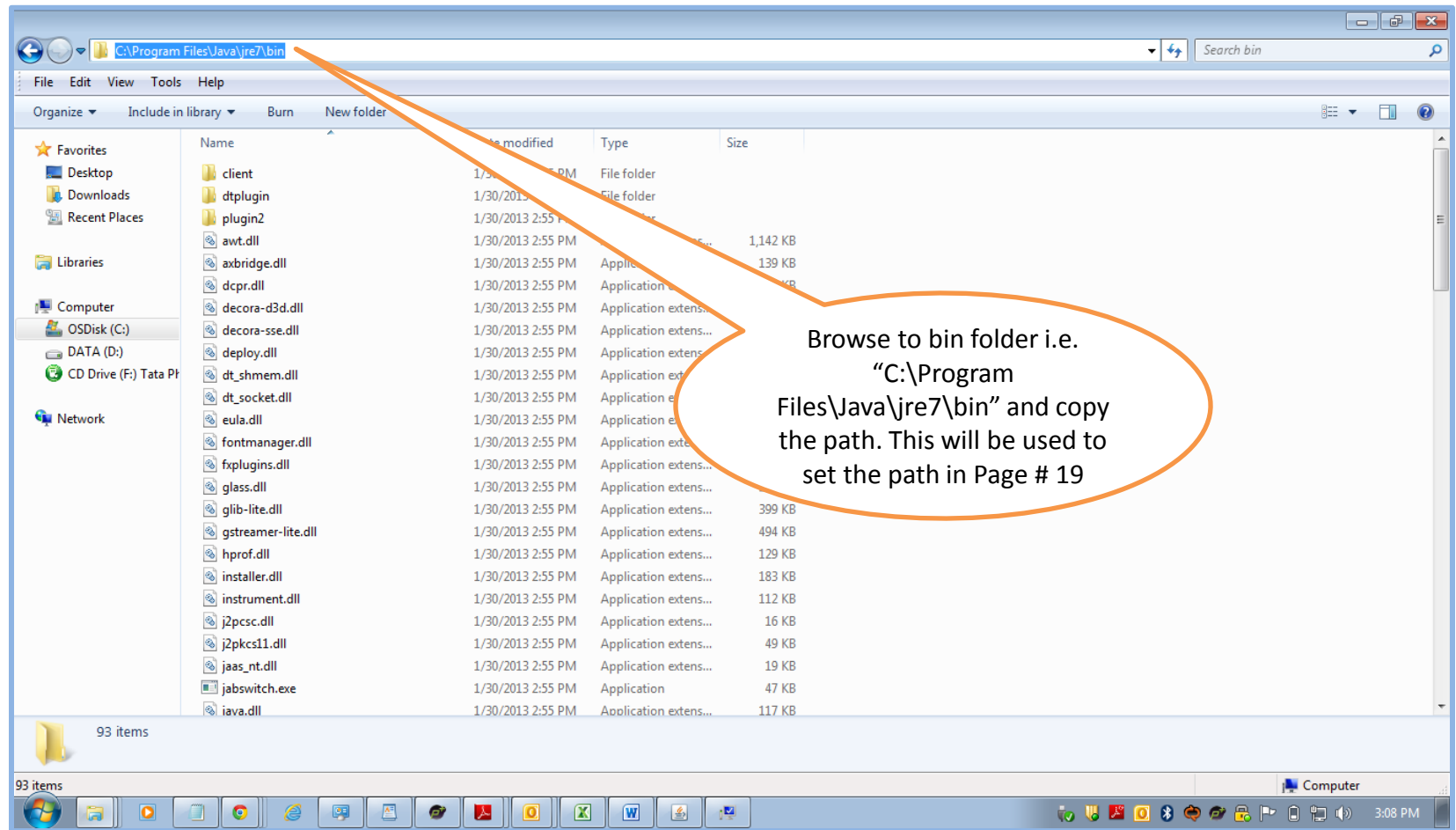
Select Language | About Java | Support | Downloads
Privacy | Terms of Use | Trademarks | Disclaimer

ORACLE

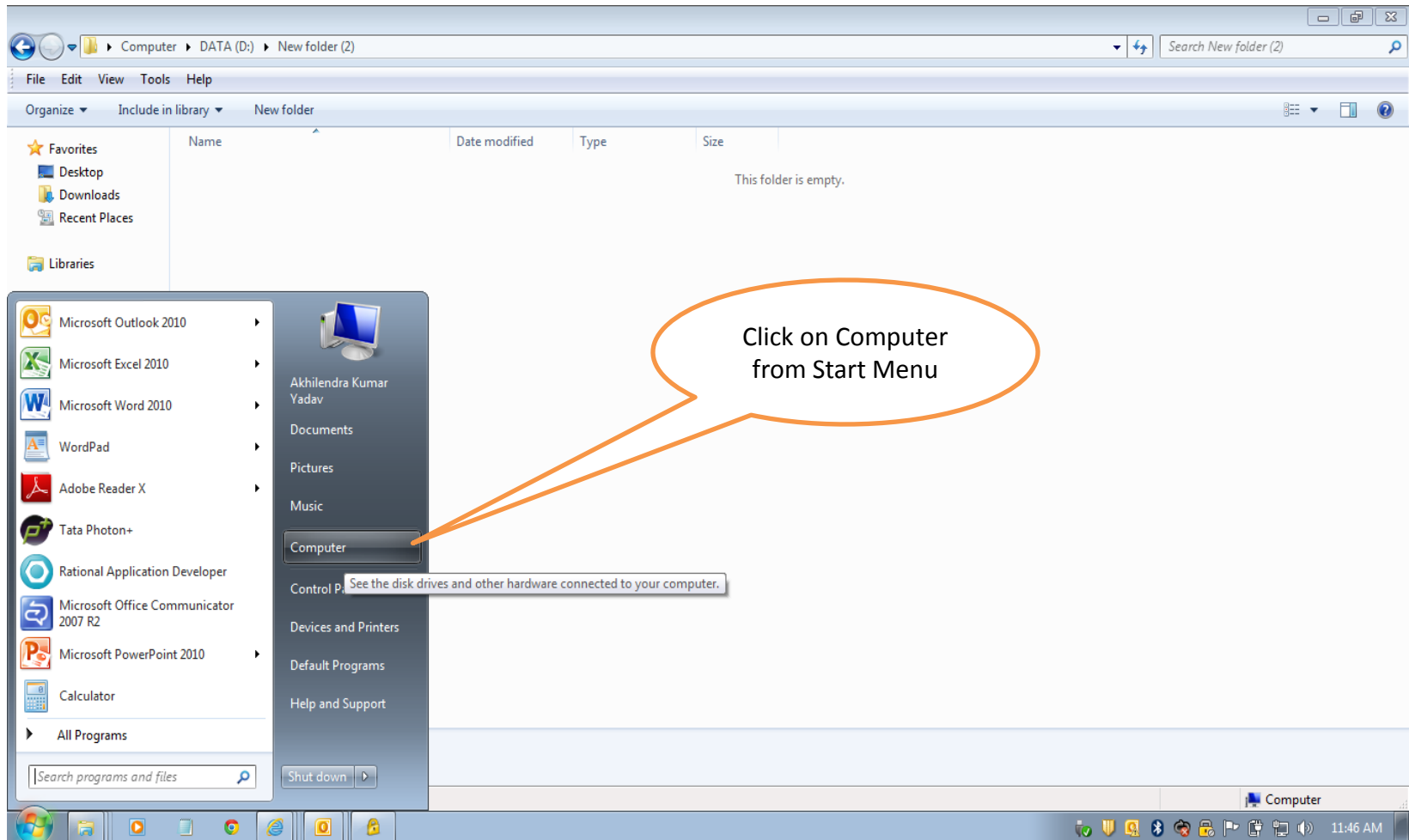
Setting Java Path in Environment Variable



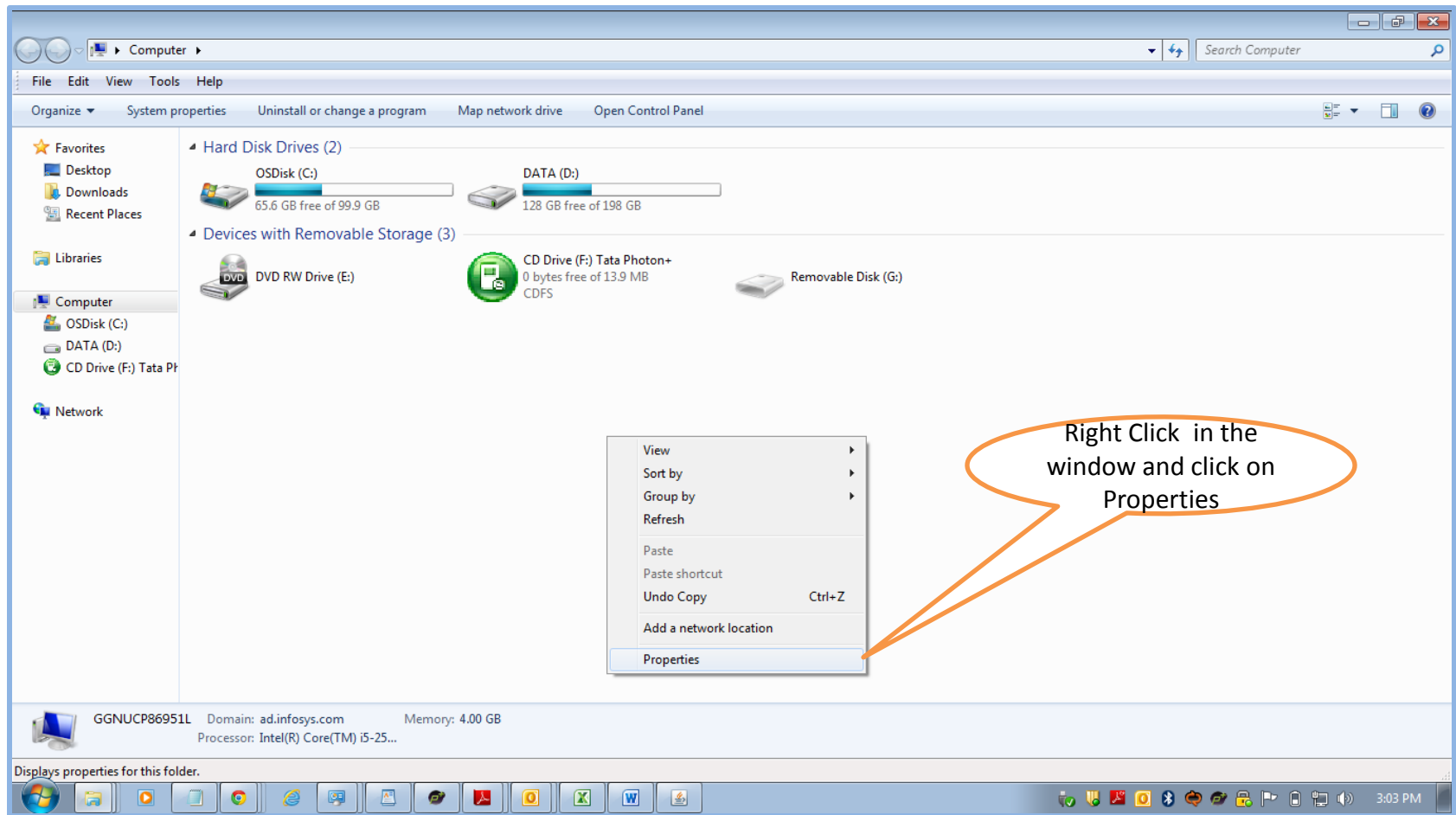
Setting Java Path in Environment Variable(contd.)



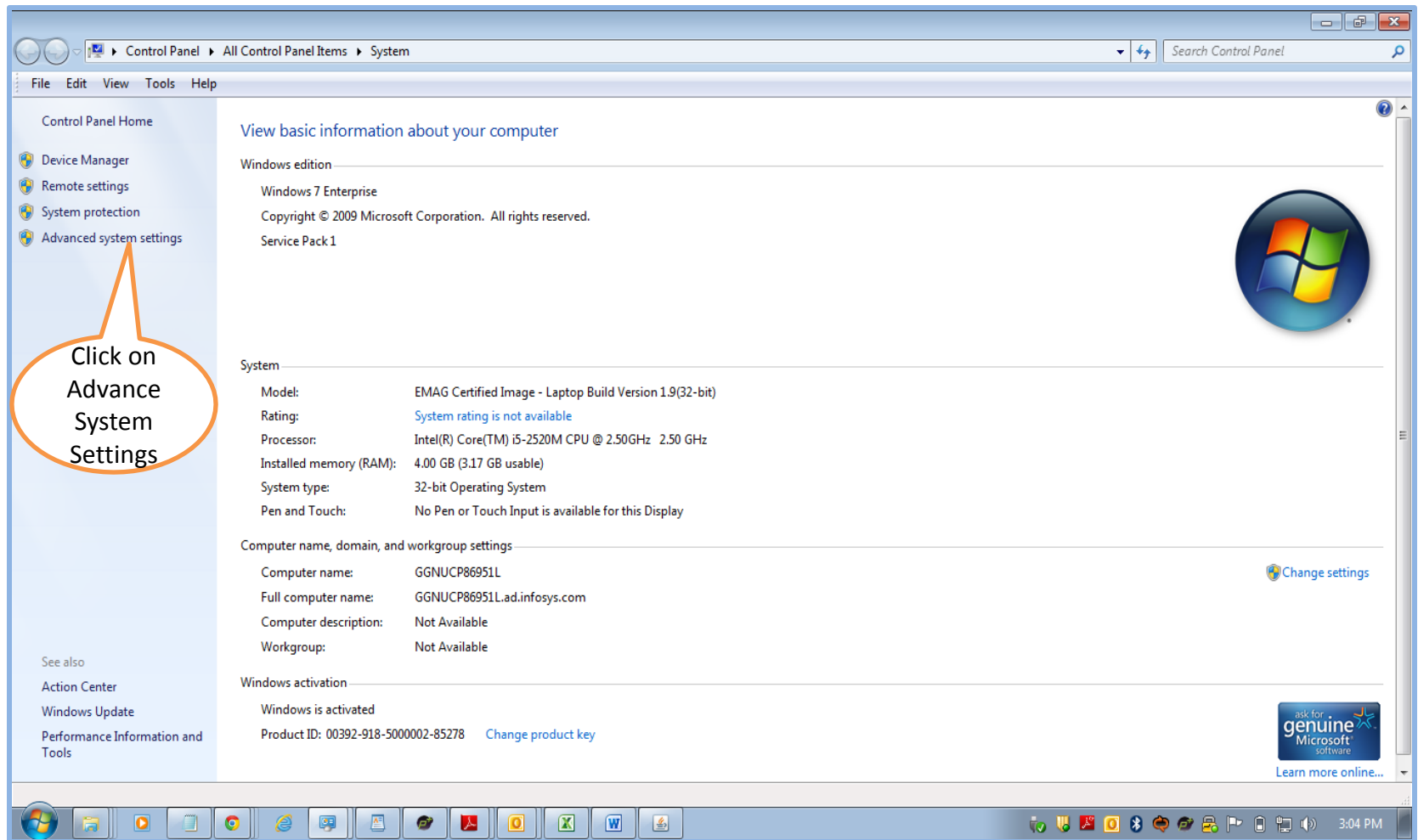
Setting Java Path in Environment Variable(contd.)



Setting Java Path in Environment Variable(contd.)

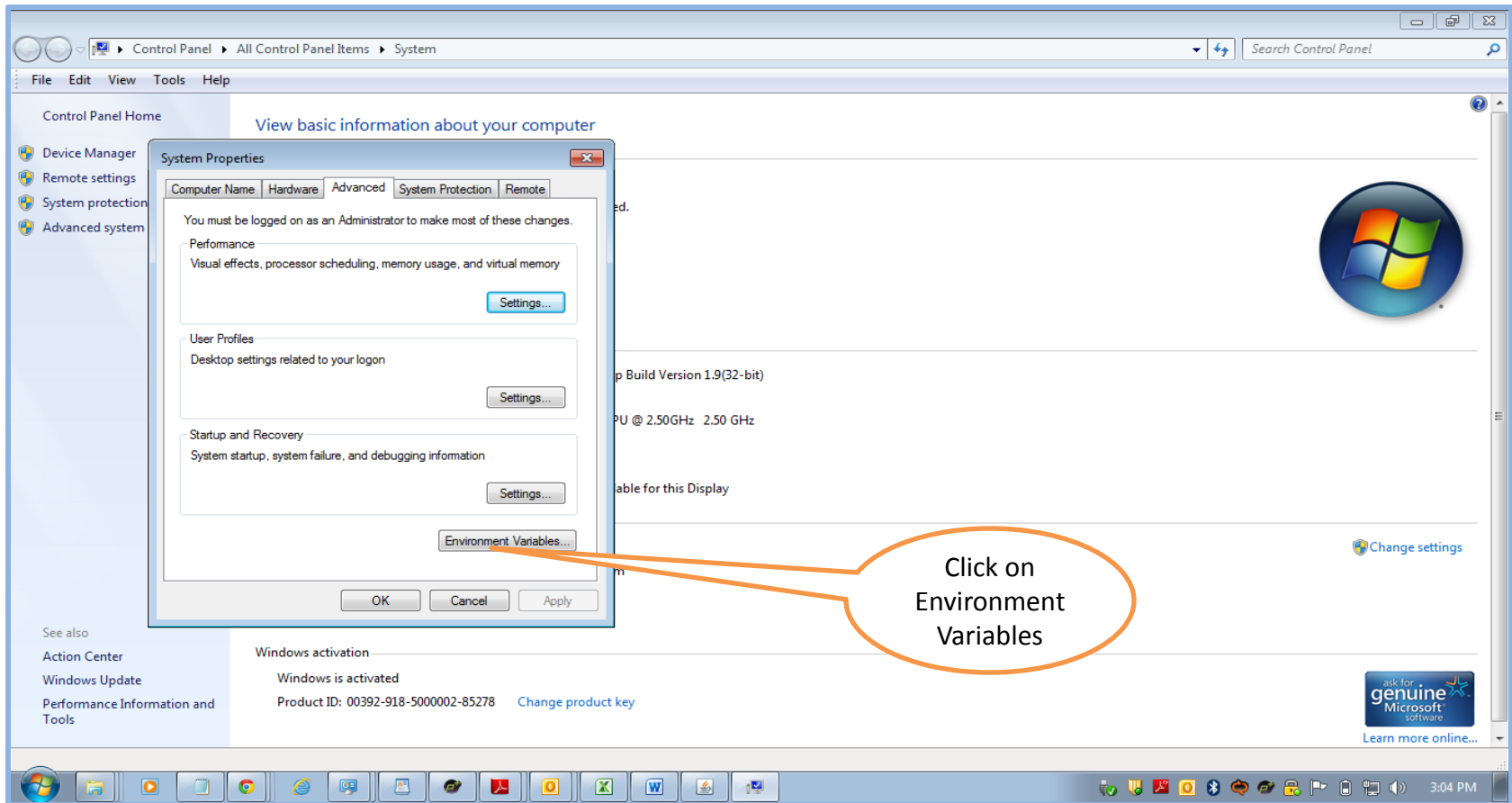


Setting Java Path in Environment Variable(contd.)

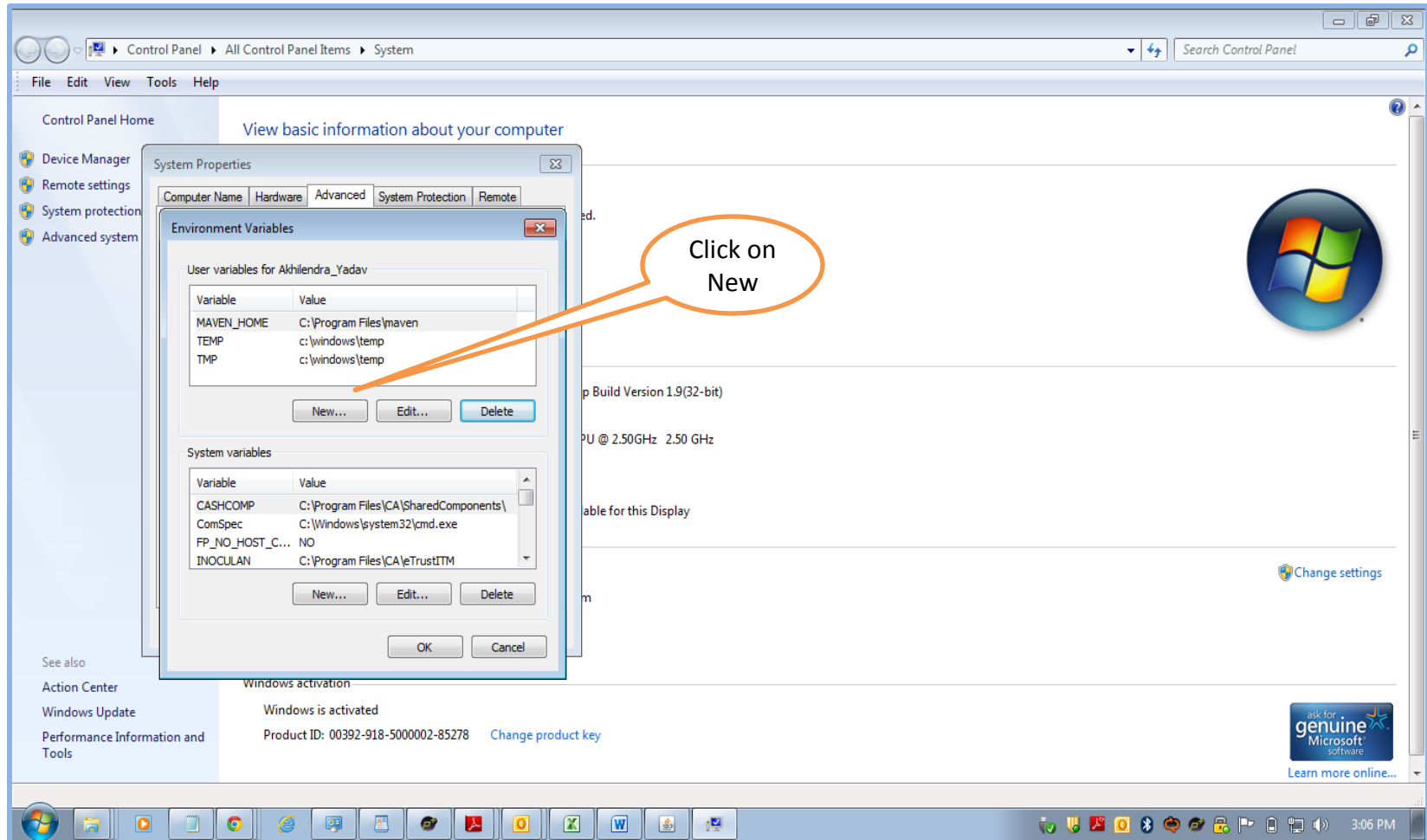


The screen may vary if Windows version is other than 7. Please look for 'Advanced System Settings' option in the screen if it is different then what is shown above.

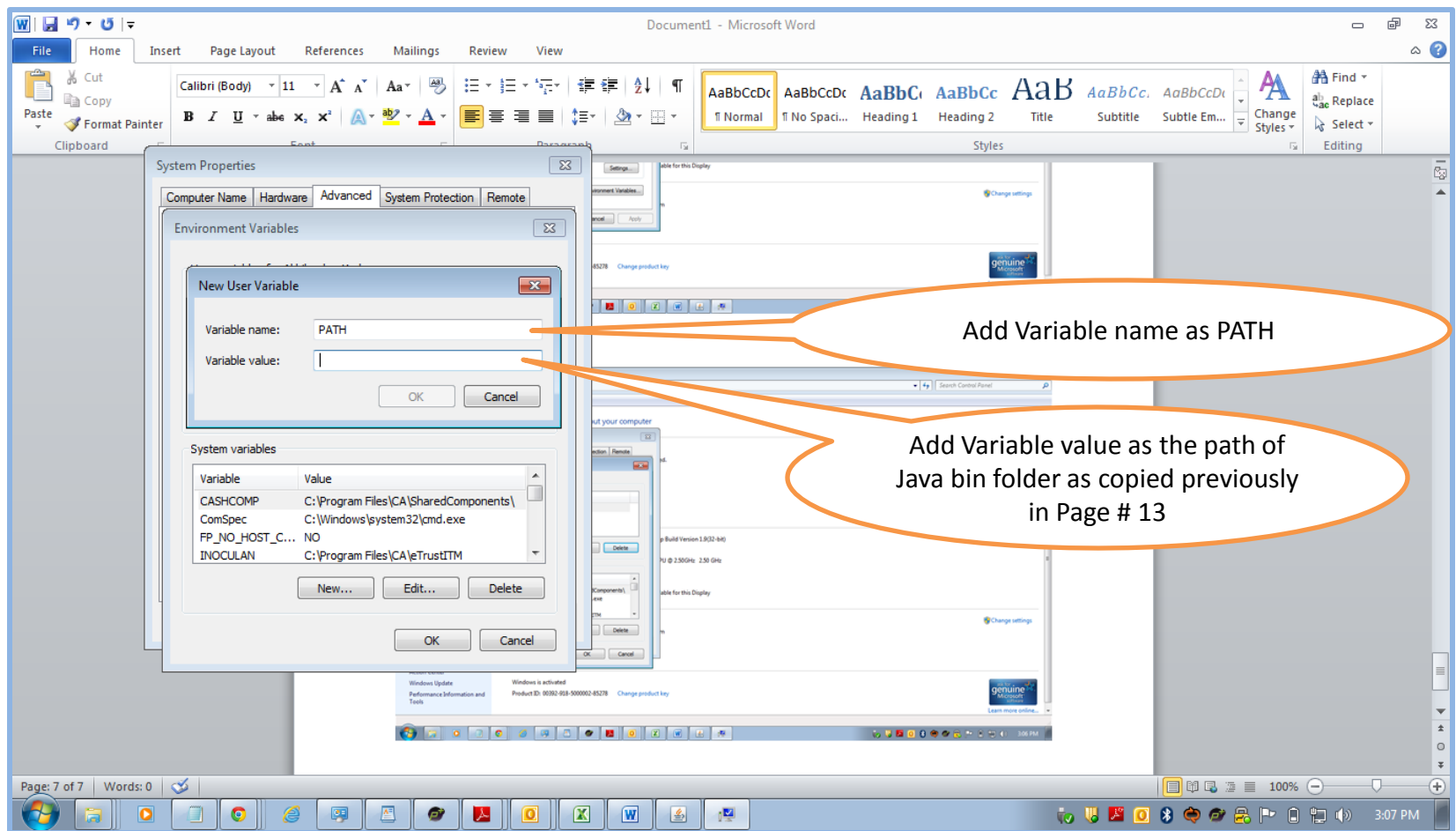
Setting Java Path in Environment Variable(contd.)



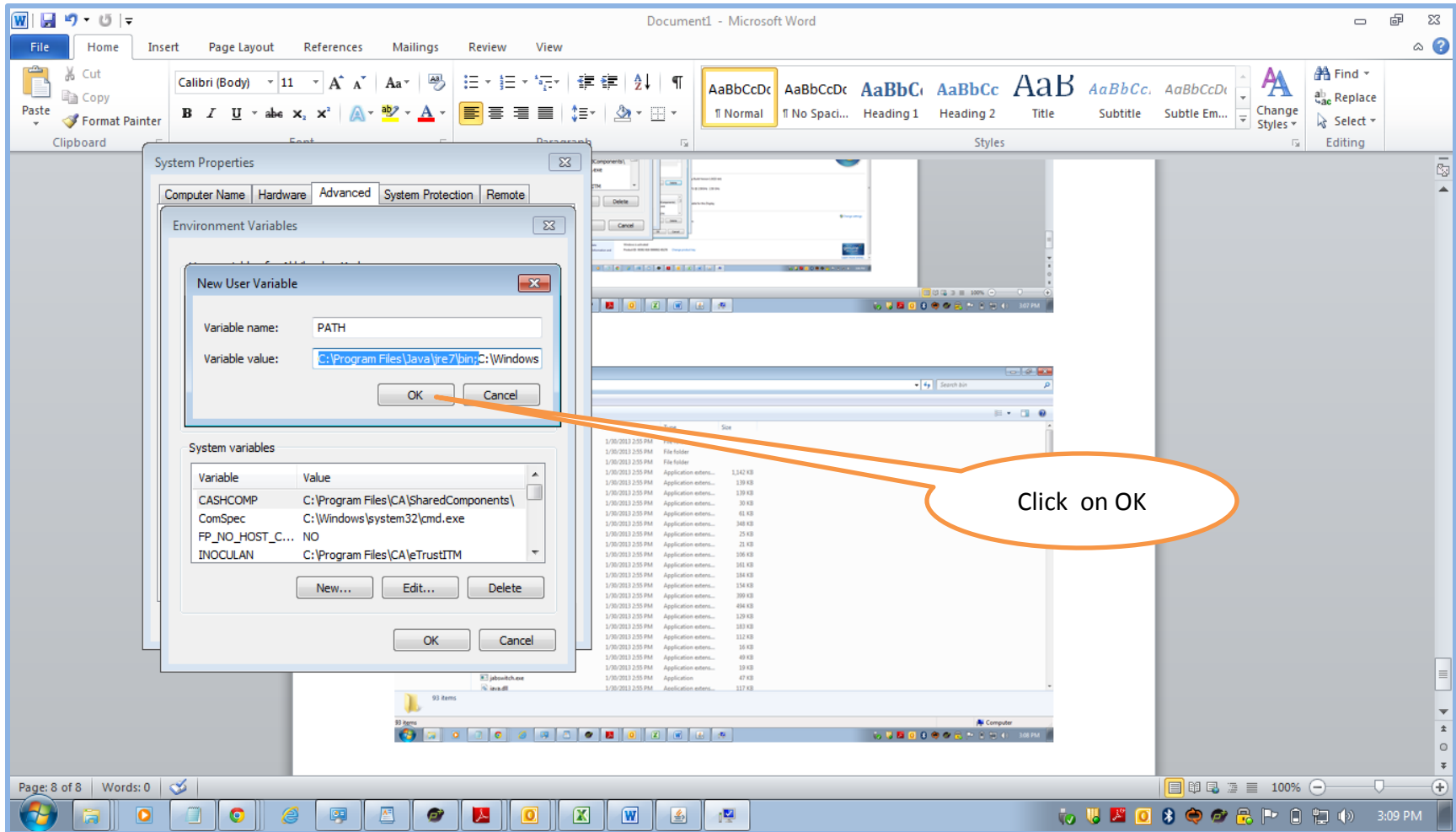
Setting Java Path in Environment Variable(contd.)



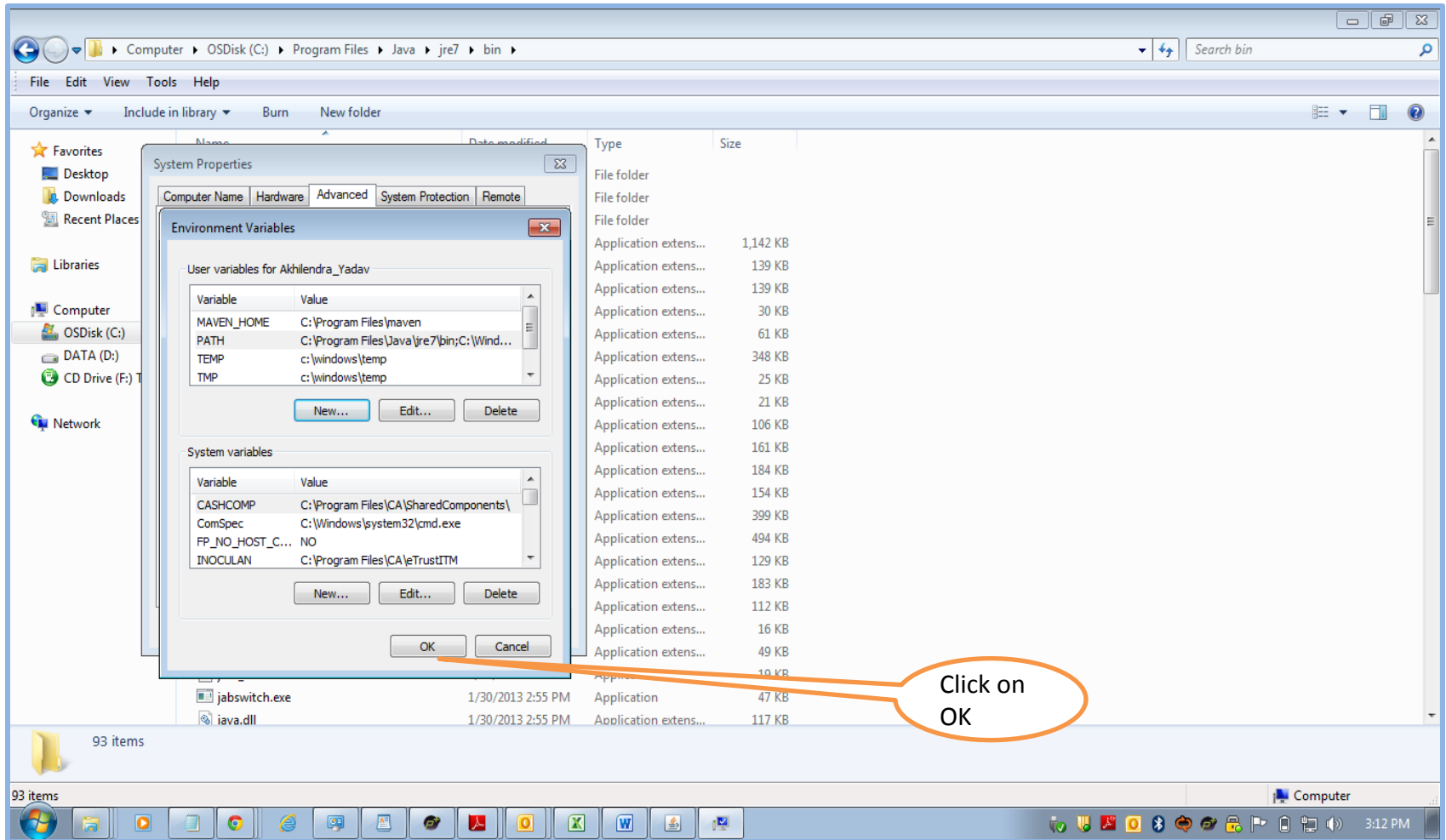
Setting Java Path in Environment Variable(contd.)



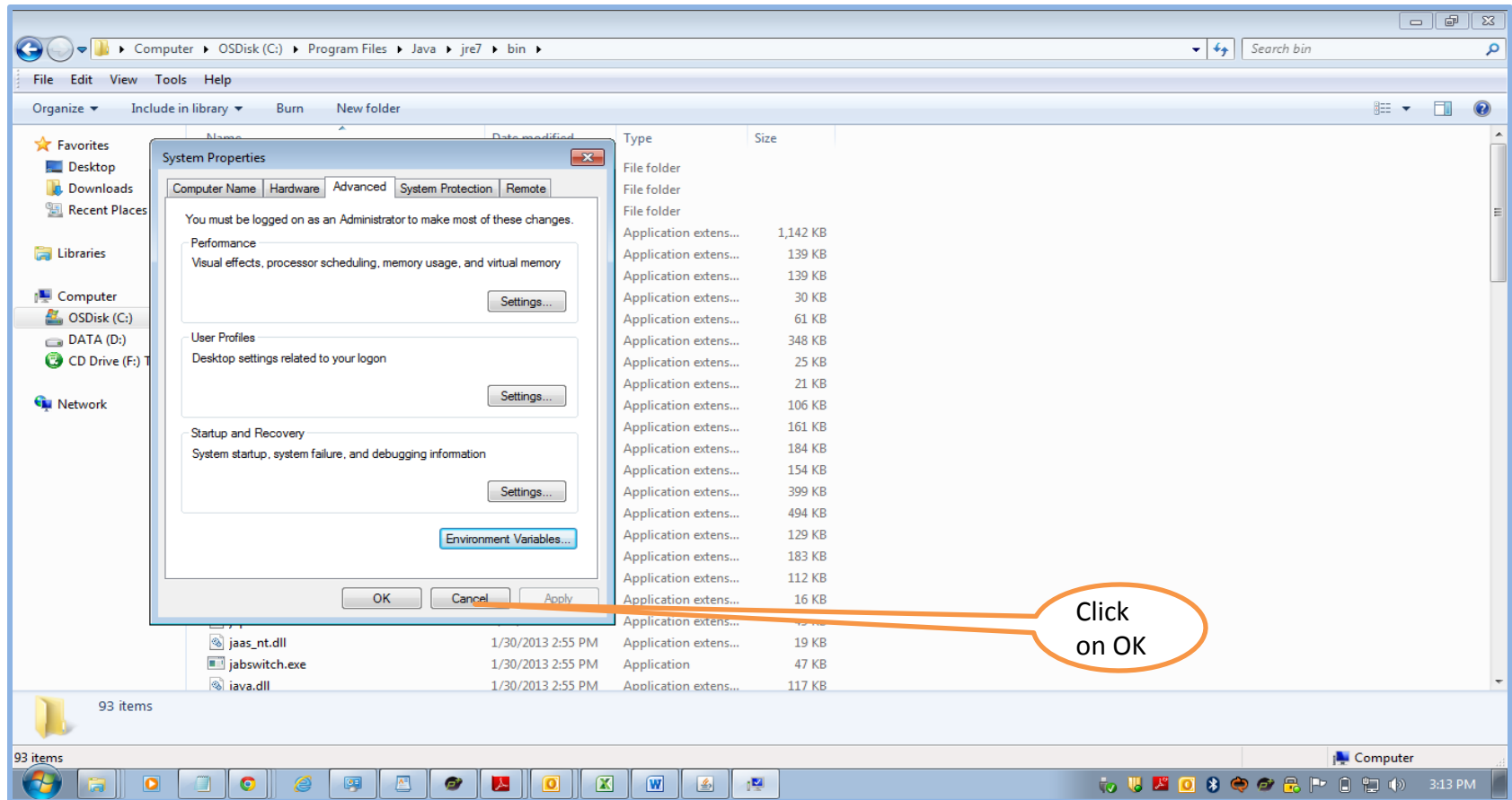
Setting Java Path in Environment Variable(contd.)



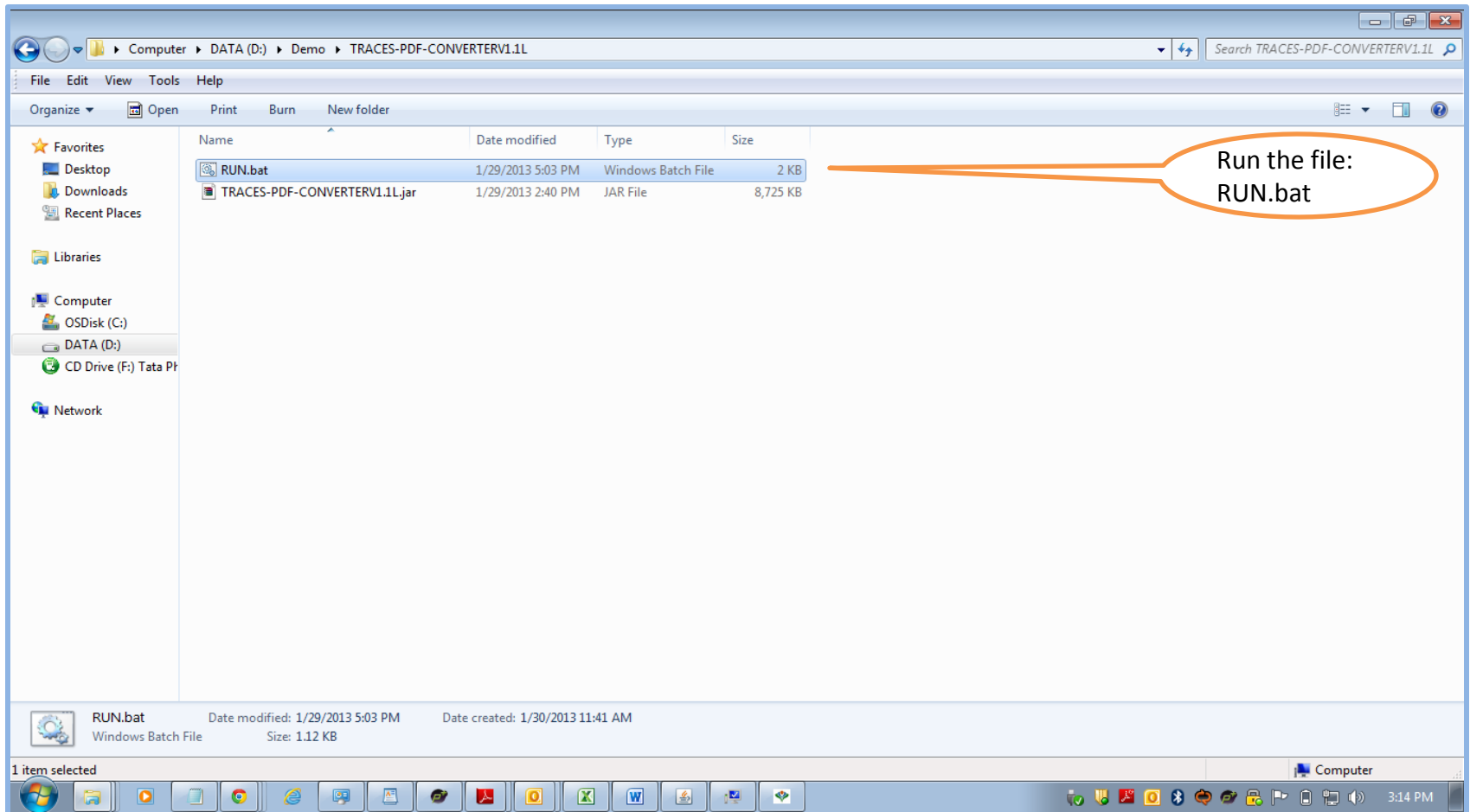
Setting Java Path in Environment Variable(contd.)



Setting Java Path in Environment Variable(contd.)



Launching TRACES PDF Converter V1.1L



Double Click Run.Bat file, which will launch User Interface

File Edit View Tools Help

Organize Open Print Burn New folder

File / Folder Selection

Select Form 16 / 16A ZIP file Browse

Password for input file

Save to folder Browse

Soft Token (Digital Signature details)

Select P12 file Browse OR Select from Certificate Store below

Certificate Store

Subject	Serial No.	Issuer	Expiration Date
---------	------------	--------	-----------------

View Certificate

Proceed Cancel

Select Form 16 / 16A ZIP file, enter password as your TAN and select destination folder to save PDF files

Select digital certificate to digitally sign the PDF files. This is **not mandatory**.

Certificate details will be displayed here

Click on 'Proceed' to continue with generation of PDF files

1 item selected

RUN.bat Date modified: 1/29/2013 5:03 PM Date created: 1/30/2013 11:41 AM Size: 1.12 KB

Windows Batch File

PDF Files

- Separate PDF files will be generated for each PAN and will be saved in the destination folder selected by you
- User can opt to manually sign Form 16 / 16A PDFs after printing them